



19 North Main Street
Phone: +1.412.494.2800
www.secureswitch.com

Houston, PA 15342
Fax: +1.412.494.5550

USA
CAGE Code 1BGJ7

SwitchCenter Installation:

SwitchCenter software requires Java Runtime Environment 7 (JRE7) or later.

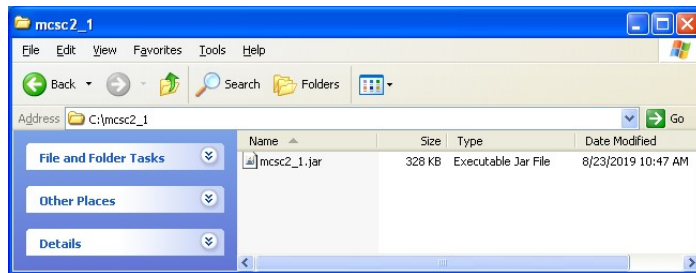
Testing with Windows 8 and Windows 10 revealed that the Java \bin\ directory is protected, so these instructions recommend saving the SwitchCenter files in their own directory. The updated instructions were tested on Windows XP, Windows 7, Windows 8, and Windows 10. Your system may already have Java Runtime Environment (JRE) installed, check the Program Files directory for a Java directory, then look for a jre or jdk sub-directory containing a bin directory. This bin directory should contain java.exe and javaw.exe.

Java may be obtained from several sites. Java Standard Edition (Java SE) may be obtained from the Oracle website:
<https://www.oracle.com/technetwork/java/javase/downloads/index.html> . Select the Java Runtime Environment (JRE) that is appropriate for your operating system. Follow the online Installation Instructions to complete JRE installation on your system. Java may also be obtained from several other sites supporting OpenJDK releases. One such OpenJDK site is <https://aws.amazon.com/corretto/>.

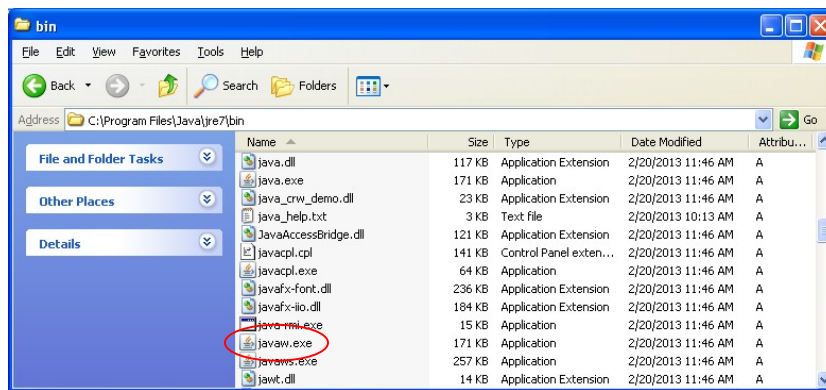
Market Central, Inc. makes no representations or warranties concerning downloads from other entities, and the user accepts all consequences of their use of said downloads.

After successfully downloading and installing Java, you will need to download the SwitchCenter (JAR) file from the link on our website at <http://www.secureswitch.com/SwitchCenter.htm> and then continue with the setup of the SwitchCenter application.

The SwitchCenter Application is delivered as a single JAVA ARchive (JAR) file. It is recommended that you save the mcsc2_1.jar file in its own directory with a short path, such as "C:\mcsc2_1\mcsc2_1.jar"
Verify that the name and extension of the file is mcsc2_1.jar.



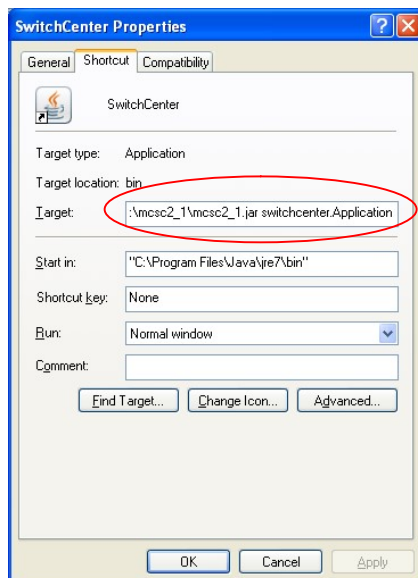
Once the .jar file is downloaded and saved, you need to configure a shortcut for SwitchCenter as follows. Browse to the Java jre or jdk \bin\ directory similar to the following: "C:\Program Files\Java\jre7\bin\". Right click on javaw.exe and select Create Shortcut. Store the shortcut on the desktop.



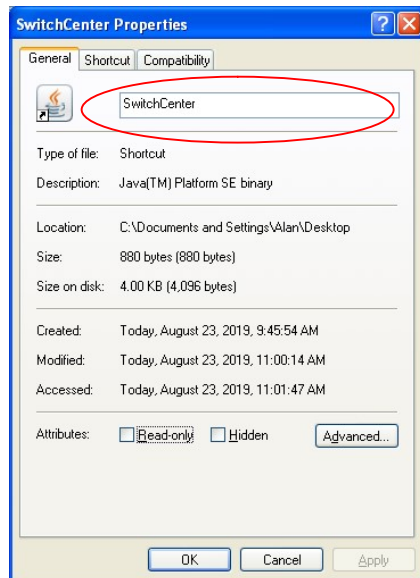
Right click on the javaw.exe shortcut and select Properties. On the Shortcut TAB, edit the target field to include the information needed to launch SwitchCenter. For Example:

`"C:\Program Files\Java\jre7\bin\javaw.exe" -cp C:\mcsc2_1\mcsc2_1.jar switchcenter.Application`

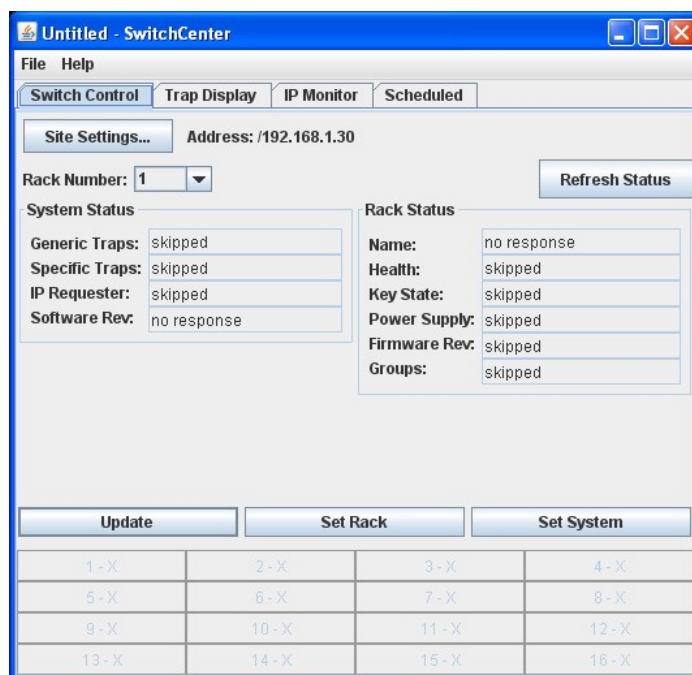
Note: The double quotes are required, there is a space between mcsc2_1.jar and switchcenter, and switchcenter.Application is case sensitive.



On the General TAB, edit the shortcut name to something like SwitchCenter. Then click the OK button.



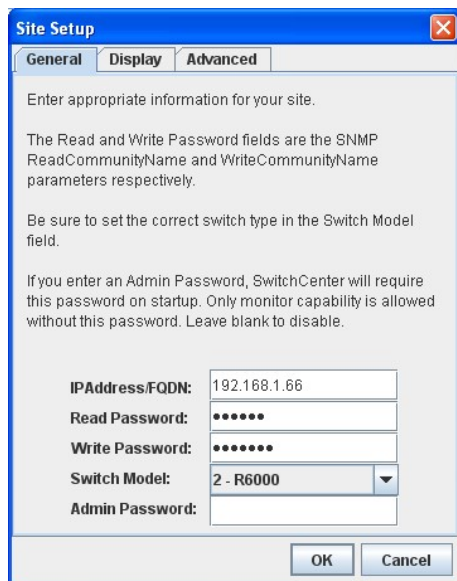
Double-click on the SwitchCenter shortcut to start SwitchCenter. Please wait while SwitchCenter starts, which can take up to 30 seconds after initial installation. This delay is because SwitchCenter is attempting to gather information from a switching system, using the default parameters which are likely not correct for your network. If you want to view the command window which launches SwitchCenter, use java.exe instead of javaw.exe. The command window will display diagnostic messages while SwitchCenter is starting.



See Operation manual for Configuration settings and the operation of the software.

The following optional information outlines the steps needed to start SwitchCenter with a startup file.

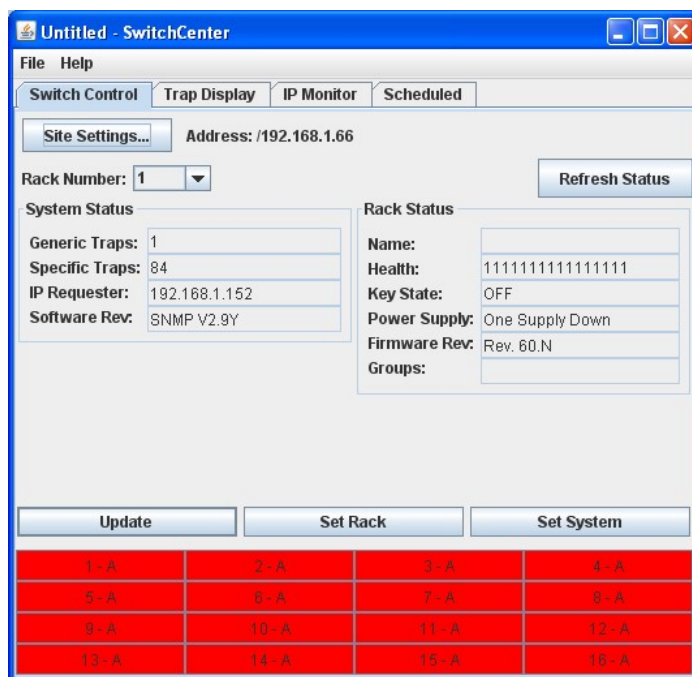
Once SwitchCenter has started, click on the Site Settings button.



The Site Setup dialog box has three tabs: General, Display, and Advanced. The General tab is selected. It contains the following fields and instructions:

- Instructions: "Enter appropriate information for your site.", "The Read and Write Password fields are the SNMP ReadCommunityName and WriteCommunityName parameters respectively.", "Be sure to set the correct switch type in the Switch Model field.", "If you enter an Admin Password, SwitchCenter will require this password on startup. Only monitor capability is allowed without this password. Leave blank to disable."
- Fields:
 - IPAddress/FQDN: 192.168.1.66
 - Read Password: (masked with dots)
 - Write Password: (masked with dots)
 - Switch Model: 2 - R6000 (dropdown menu)
 - Admin Password: (empty field)
- Buttons: OK, Cancel

After you enter the IP address, SNMP read and write community names (passwords), select the appropriate Switch Model for your switching system, enter an optional Admin Password, then click OK.

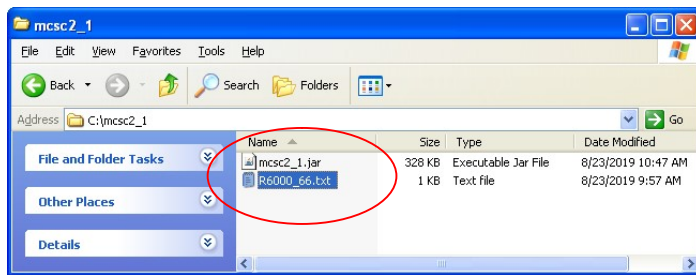


The SwitchCenter main window shows the following information:

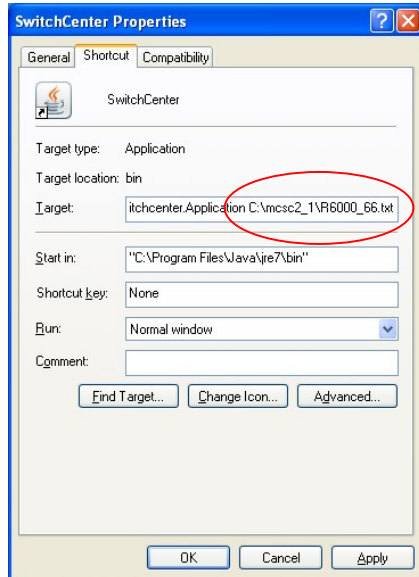
- File menu: Site Settings... (Address: /192.168.1.66)
- Rack Number: 1 (dropdown menu)
- System Status:
 - Generic Traps: 1
 - Specific Traps: 84
 - IP Requester: 192.168.1.152
 - Software Rev: SNMP V2.9Y
- Rack Status:
 - Name: (empty field)
 - Health: 1111111111111111
 - Key State: OFF
 - Power Supply: One Supply Down
 - Firmware Rev: Rev. 60.N
 - Groups: (empty field)
- Buttons: Update, Set Rack, Set System
- Table of Rack Status (16 rows, 4 columns):

1 - A	2 - A	3 - A	4 - A
5 - A	6 - A	7 - A	8 - A
9 - A	10 - A	11 - A	12 - A
13 - A	14 - A	15 - A	16 - A

After you have SwitchCenter working with your switching system, click on the File > Save As menu to save the settings for use during startup. Save the startup file in the same directory as the mcsc2_1.jar file. In this example, the startup file is saved as "C:\mcsc2_1\R6000_66.txt". The .txt filename extension is recommended for the startup file.



Close SwitchCenter, then edit the shortcut, by right clicking and selecting Properties. In the Shortcut TAB, edit the Target to add the path and filename of the startup file after switchcenter.Application. For this example add " C:\mcsc2_1\R6000_66.txt". (Note that there is a space between switchcenter.Application and C:\mcsc2_1\R6000_66.txt).



When you now start SwitchCenter, it will use the configuration information that you saved in the startup file rather than the defaults.